

IM50L35-10X

5MP 10X Automatic zoom network module



The IM50L35 5.0MP 10X automatic zoom high-definition network module is based on the Goke embedded encoding platform, using a 1/2.8 "low illumination 5 million CMOS image sensor, with good low illumination and wide dynamic effects, and a maximum output resolution of up to 2592X1944@20fps. The image is clearer and more delicate. Suitable for scenes that require high-definition image effects.

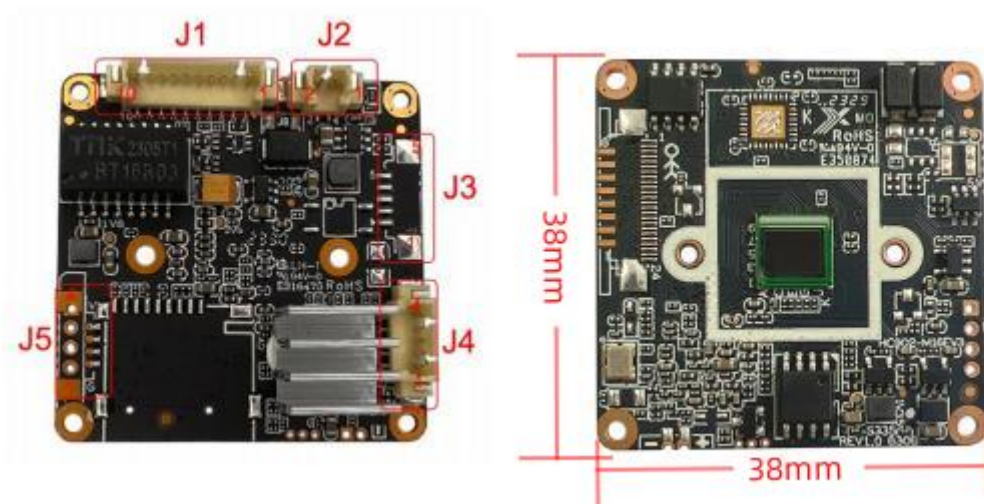
Convenient auxiliary focusing function, after installation, you can use IE browser or client software to adjust the lens focus anytime and anywhere, ensuring clear images.

This product has good protocol compatibility, supports standard ONVIF2.4 protocols, Hikvision, XM protocols, etc., and can provide standard SDKs for quick integration by customers.

- 2592 x 1944 resolution, 30/25 fps, automatic zoom
- SONY 1/2.8" 5MP IMX335 CMOS image sensor
- Color: 0.05Lux@F1.2 : 0.01Lux@F1.2 B/W
- 5x optical fast focusing with clear images
- Support two way audio
- Support multiple night vision modes with dual light
- Smart 2D/3D noise reduction algorithms, AE exposure algorithms, night images clean and refreshing
- Support H.265/H.264 Main profile/M-JPEG encoded
- Support mobile detection zone and privacy zone setting
- Support the P2P on Android and iOS
- Support SD card storage, with maximum capacity of 128GB
- Support standard ONVIF/RTSP/Hikvision/XM protocol;
- Seamless integration with PC software platforms such as Hikvision, XM CMS, and NVR backend;
- Provides Linux, Windows SDK development kits, and CGI protocol.

Technical specifications:

Image sensor	
Sensor	1/2.8" 5.0MP CMOS Sony IMX335
Maximum resolution	2592x1944@25/30fps
Minimum illumination	0.05Lux@F1.2(Color mode);0.01Lux@F1.2(Black and white)
Shot	
Focal length	5-50mm, F2.36~2.4;
Viewing angle	72 ° (near focus)~7 ° (far focus)
Audio frequency	
Input	Passive MIC
output	Built in amplifier for direct speaker connection
Function	
Lamp control mode	Infrared/White/Dual lamp mode
Support	AI humanoid detection/Motion detection/human detection
Alarm push	Mobile app/SMTP/FTP alarm push
P2P	Android and iOS
Reset	Support hardware reset and unbinding P2P function
Local storage	
Storage	TF card storage (up to 128GB)
Local storage	High definition/standard definition options
Recording method	Manual recording, alarm recording
View recording	Support remote video play back
General protocol	
Network protocol	TCP/IP, HTTP, NTP, DHCP, UDP, SMTP, RTP, RTSP,ARP
ONVIF protocol	Standard ONVIF
Compatibility	Support access to platforms such as Hikvision,XM CMS,
Network interface	
Wired	10/100M RJ45 network interface
Other	
Power supply	12VDC@0.20A
Specifications	Encoding motherboard: 38x44mm, overall height: 60mm
Operation temperature	-30°C~60°C
Working humidity	0% -90% RH (non condensing)



Interface	pin	Pin name	Functional parameter
J1	1	12VDC	DC power input, voltage range 5V-13.8V
	2	Gnd	Signal ground
	3	ETH_LED	Network indicator light interface
	4	WL	Soft photosensitive white light
	5	Eth_TX-	Adaptive network interface, physically receiving/transmitting signals (differential -)
	6	Eth_TX+	Adaptive network interface, physically receiving/transmitting signals (difference +)
	7	Eth_RX-	Adaptive network interface, physically receiving/transmitting signals (differential-)
	8	Eth_RX+	Adaptive network interface, physically receiving/transmitting signals (difference +)
	9	CDS_IN-IR	Hard light sensitive infrared
	10	IR	Soft photosensitive infrared
J2	1	IR-CUT+	IRCUT signal +
	2	IR-CUT-	IRCUT signal-
J3	1	Alarm_in1	Alarm input 1
	2	Alarm_in2	Alarm input 2
	3	GND	Signal ground
	4	Alarm_out1	Alarm relay output 1
	5	Alarm_out2	Alarm relay output 2
J4	1	Audio_In	Audio linear input interface,
	2	Gnd	Signal ground
	3	Audio_Out	Audio linear output interface
	4	SYS_RST	Manual Reset
	5	NC	
J5	1	3.3V	3.3V power supply
	2	USB_DM	data D-
	3	USB_DP	data D+
	4	GND	Signal ground