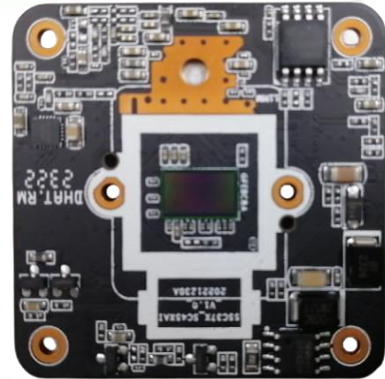


IMA50S37 5MP Full color module



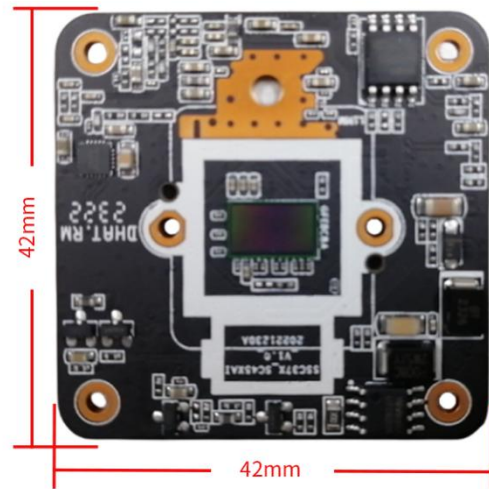
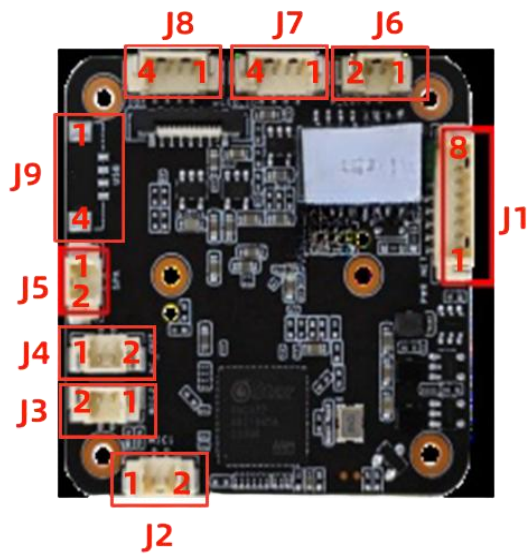
Key Features:

- 1/1.8 5MP CMOS sensor;
- Supports H.265+, H.265, and H.264 encoding;
- Support soft photosensitivity: full-color mode;
- Support intelligent analysis: pedestrian detection, vehicle detection, area detection, and Warning line detection
- Support voice intercom, voice broadcasting, and custom voice;
- Supports image flipping and DWD
- Support Onvif;
- Provide SDK (Windows, Android, Linux) development packages

Technical Specifications:

Image Sensor	
Sensor	1/1.8" CMOS
Maximum Resolution	2880X1620@25fps
Camera	
Wide Dynamic Range	Digital WDR
Exposure Mode	Auto/ Manual/shutter mode
White balance	Auto/Manual /ATW/Indoor/Outdoor/Daylight lamp/Sodium lamp
Day & Night	External control (IR Cut Filter)
Compression	
Video Compression	H.265+/H.265/H.264 Video encoding
Audio Compression	G711 Supports bidirectional voice intercom and audio video synchronization
Image Resolution	
Main Stream	2880×1620/2688×1520/2560×1440/2304×1296/1920×1080/1280×720@25fps
Sub Stream	D1/VGA/640×360
General Protocol	
Network Protocol	TCP/IP/HTTP/NTP/DHCP/SMTP/RTSP
ONVIF protocol	Yes
Function	
OSD	Yes
Motion Detection	Yes
Humanoid Detection	Yes
Regional detection	Yes
Warning line detection	Yes
Interface	
Network	1ch 10/100 BaseT Ethernet,RJ45 interface
Lamp interfacel	PWM infrared, PWM warm light
Audio	1 channel audio input and 1 channel audio output
USB	reserved
Other	
Power Supply	12VDC
Size	42X42mm
Operation Temperature	-40°C ~65°C
Working Humidity	≤90%RH(non-condensing)

Interface Pin Definition:



Interface	Pin	Pin name	Functional parameter
J1	1	DC12V+	DC12Vinput
	2	GND	Gnd
	3	RJ45_6	Network receiving differential signal RJ6
	4	RJ45_3	Network receiving differential signal RJ3
	5	RJ45_2	Network receiving differential signal RJ2
	6	RJ45_1	Network receiving differential signal RJ1
	7	Reset	Reset
	8	LED_+	Network status indicator light positive
J2(main)	1	MIC-	MIC-
	2	MIC+	MIC+
J3 (auxiliary)	1	MIC-	MIC-
	2	MIC+	MIC+
J4	1	GND	GND
	2	AUDIO_OUT	Audio output
J5	1	SPK-	SPK-
	2	SPK+	SPK+
J6	1	CDSIN	Hard photosensitivity
	2	GND	GND
	3	PWM1	NC
	4	PWM0	Warm/White Light
J7	1	IR-CUT	Output
	2	IR-CUT	Output
J8	1	GND	GND
	2	TX	Serial port
	3	RX	
	4	IO-OUT	SPKEN
J9	1	GND	GND
	2	DP	DP
	3	DM	DM
	4	12V	12output