



Shenzhen CCDCAM Technology Co.,Ltd

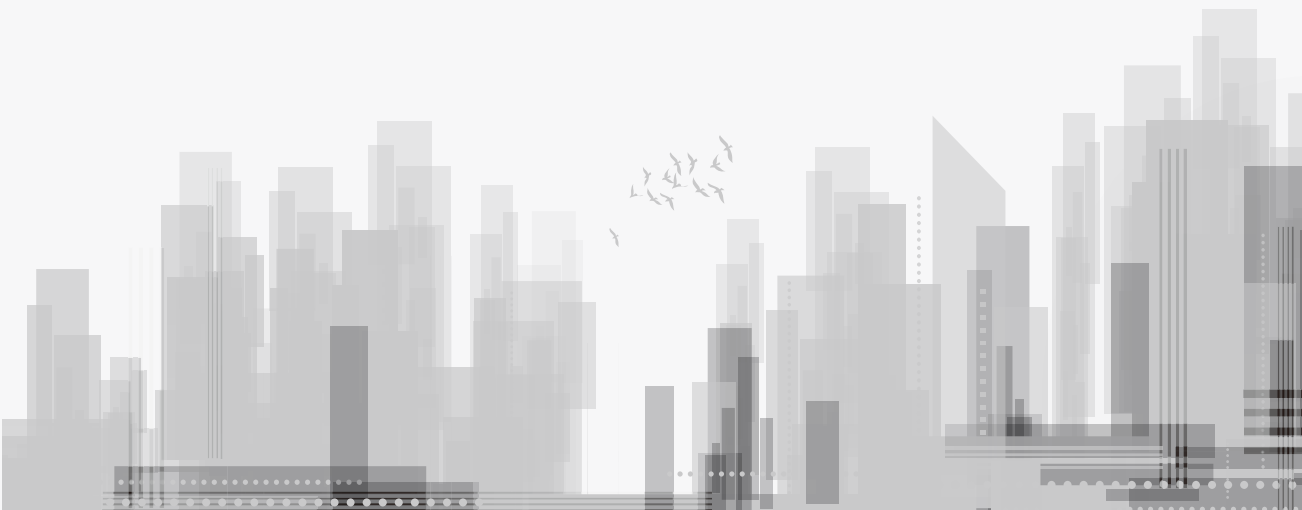
www.ccdcam.com

CCDCAM Introduction

Shenzhen CCDCAM Technology Co.,Ltd is a video-centric AIoT solution and service provider. With more than 16 years' technology and marketing experience, we've built up a strong experienced design team to assist you with all aspects of video products and service.

CCDCAM advances the core technologies of audio and video encoding, video image processing, and related data storage, as well as forward-looking technologies such as artificial intelligence. Committed to technological innovation, the company continues to explore emerging opportunities and has already established businesses in machine vision, robotics, video collaboration, smart fire safety, smart storage, smart security check, smart control, smart thermal imaging, etc. Accordingly, the company provides professional and customized solutions to meet diverse market requirements. all based on video intelligence technology — to explore channels for sustaining long-term development.

We adhere to the customer first ,a deep understanding of customer needs, take the initiative to take responsibility; We always try our best to improve customer experience and satisfaction. Achieving long-term cooperation and win - win with our customers.





P
01-09

Video Intercom Solution

P
10-20

Underwater Camera

P
21-26

Industrial Thermal Solution

P
27-32

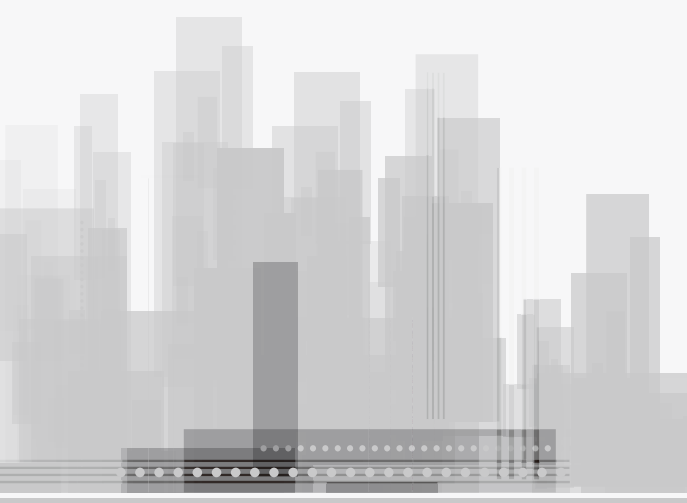
Mobile DVR System

P
33-36

IP Zoom Module

P
37-42

IP Camera Module

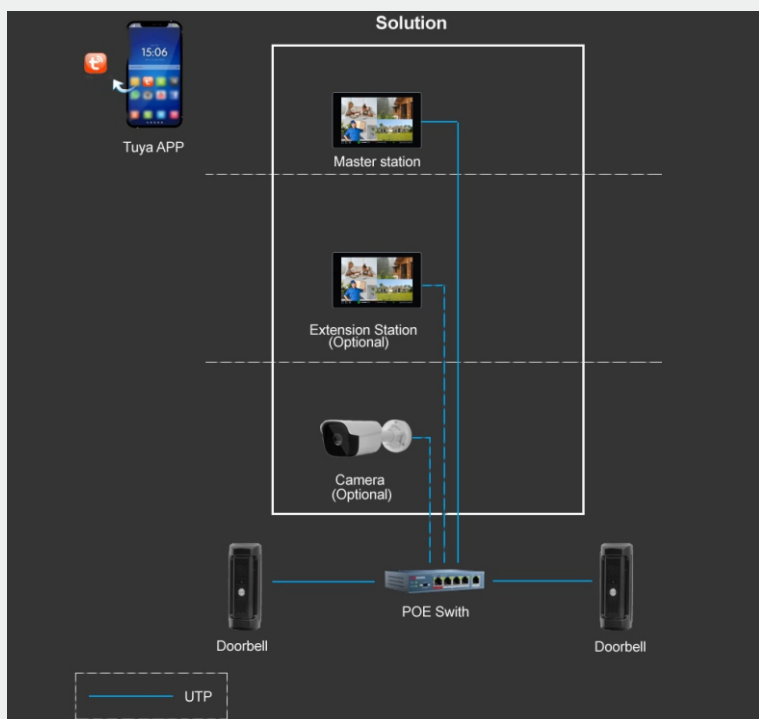


Video Intercom Solution

IP Video Intercom Doorbell

IP Video Intercom Doorbell Kit

Dual WiFi Video Intercom Doorbell Kit



IP Solution



Dual WiFi Solution



Key Features

- Support HTTP,TCP/IP,IPv4,DHCP,NTP,SIP
- Support Wifi convenient setting up and no wiring required
- 5MP resolution,with 940nm IR supplement
- Support web configuration
- Noise suppression and echo cancellation
- IP65 protection level
- Support Tuya APP Mobile Control
- Support Onvif

KD8501
5MP Waterproof IP Video Doorbell

Specification

Image Sensor	5MP, 1/2.7", Day/Night
Sensitivity	Color : 0.05Lux B/W0.01Lux
Lens	3.0mm F2.5
Field of view	125°(Horizontal),V65°(Vertical)
Field Of View Adjustment	-45°~45
Minimum Working Distance	0.5m
Shutter Time	1/3~ 1/12000 s (Auto, maximum value setting)
Main Stream	2560x1440/1920x1080/@30fps
Sub Stream	640x480/640x360@30fps
Audio Output	Built-in speaker
Audio Input	Built-in microphone
IR Illumination	IR LED,940nm
Network parameters	Support, 2.4G WI-FI
Protocols	HTTP/TCP/IP/IPv4/DHCP/NTP/SIP
Other Features	Micro SD HC
Power	DC12V
Operating Temperature	-30°C ~ +70°C

Application Scenario



Villa



House



Hotel



CBD



Key Features

- 1/2.8" 2MP IMX307 Day/Night
- Maximum resolution up to 1920X1080@30fps
- Support HTTP,TCP/IP,IPv4,DHCP,NTP,SIP
- Pinhole wide angle
85°(Horizontal),V45°(Vertical)
- Echo cancellation and noise suppression
- Supports standard POE power supply
- Supports mechanical doorbell,easier to call
- Tuya APP Mobile Control: Receive calls, open the door and live view remotely
- Supports web configuration
- Support Onvif

KV8252

2MP IP Video Intercom Waterproof Vandal-Resistant Doorbell

Specification

Image Sensor	2MP, 1/2.8" SONY STARVIS IMX307,Day/Night
Sensitivity	Color : 0.003Lux B/W0.0001Lux
Lens	3.7 mm, F2.0,pinhole
Field of view	85°(Horizontal),V45°(Vertical)
Field Of View Adjustment	-45°~45
Minimum Working Distance	0.5m
Shutter Time	1/3~ 1/12000 s (Auto, maximum value setting)
Main Stream	1920x1080@25fps,1280x720@25fps
Sub Stream	640x480, 640x360, 352x288
Audio Output	Built-in speaker
Audio Input	Built-in microphone
IR Illumination	IR LED,940nm
Network parameters	10Base-T/100Base-TX Ethernet
Protocols	TCP/IP/SIP/HTTP/HTTPS/NTP/ONVIF/RTSP/DHCP
Other Features	Micro SD HC
Power	DC12V
Operating Temperature	-30°C ~ +70°C

Application Scenario



Villa



House



Hotel



CBD



Key Features

- 1/2.7" 5MP Day/Night
- Maximum resolution up to 2560X1440@30fps
- Support HTTP,TCP/IP,IPv4,DHCP,NTP,SIP
- HD wide-angle lens
125°(Horizontal) V65°(Vertical)
- Echo cancellation and noise suppression
- Supports standard POE power supply
- Supports mechanical doorbell,easier to call
- Tuya APP Mobile Control: Receive calls, open the door and live view remotely
- Supports web configuration
- Support Onvif

KV8558

5MP IP Video Intercom Waterproof Vandal-Resistant Doorbell

Specification

Image Sensor	5MP, 1/2.7", Day/Night
Sensitivity	Color : 0.05Lux B/W0.01Lux
Lens	3.0mm F2.5
Field of view	125°(Horizontal),V65°(Vertical)
Field Of View Adjustment	-45°~45
Minimum Working Distance	0.5m
Shutter Time	1/3~ 1/12000 s (Auto, maximum value setting)
Main Stream	2560x1440/1920x1080@30fps
Sub Stream	640x480/640x360@30fps
Audio Output	Built-in speaker
Audio Input	Built-in microphone
IR Illumination	IR LED,940nm
Network parameters	Support, 2.4G WI-FI
Protocols	HTTP/TCP/IP/IPv4/DHCP/NTP/SIP
Other Features	Micro SD HC
Power	DC12V
Operating Temperature	-30°C ~ +70°C

Application Scen



Villa



House



Hotel



Key Features

- 1 master station + 2 vandal-proof IP doorbells
- Master station is with SIP protocol, support DC 12V or PoE power supply(external)
- Two-way audio intercom between door station and master station or Tuya APP
- Noise suppression and echo cancellation
- 10.1-inch LCD 1280x800 resolution
- Support TF card,up to 512G
- Built-in 64G SSD
- 2-ch alarm input,1-ch alarm output
- Remote unlocking on Tuya APP

DK8252

IP Video Intercom Kit

Specification

Operating System	Linux
LCD	10.1-inch TFT LCD(1280*800)
Operation Method	Capacitance touch screen
Outdoor Station	Support 4*doorbell/camera
Compression	H265/H264
Record	Support
Storage	Built-in 64GB SSD
TF Card	Support TF Card ,up to 512G
USB Interface	1 × USB 2.0
Audio Output	Built-in speaker
Audio Input	Built-in microphone
Sound Quality	Echo cancellation
APP Support	Tuya APP
Network Interface	1 RJ-45 10/100M self-adaptive
Power Supply	DC/Type-C 12V
Consumption	< 10W
Work Temperature	-10°C ~ +55°C
Dimensions	270mm*165mm*30mm

Application Scenario



Villa



House



Hotel



CBD



Key Features

- 1 master station + 2 vandal-proof IP doorbells
- Master station is with SIP protocol, support DC 12V or PoE power supply(external)
- Two-way audio intercom between door station and master station or Tuya APP
- Noise suppression and echo cancellation
- 10.1-inch LCD 1280x800 resolution
- Support TF card,up to 512G
- Built-in 64G SSD
- 2-ch alarm input,1-ch alarm output
- Remote unlocking on Tuya APP

KV8558

IP Video Intercom Kit

Specification

Operating System	Linux
LCD	10.1-inch TFT LCD(1280*800)
Operation Method	Capacitance touch screen
Outdoor Station	Support 4*doorbell/camera
Compression	H265/H264
Record	Support
Storage	Built-in 64GB SSD
TF Card	Support TF Card ,up to 512G
USB Interface	1 × USB 2.0
Audio Output	Built-in speaker
Audio Input	Built-in microphone
Sound Quality	Echo cancellation
APP Support	Tuya APP
Network Interface	1 RJ-45 10/100M self-adaptive
Power Supply	DC/Type-C 12V
Consumption	< 10W
Work Temperature	-10°C ~ +55°C
Dimensions	270mm*165mm*30mm

Application Scenario



Villa



House



Hotel



CBD



Key Features

- 1 master station + 2 Waterproof IP Video Doorbell
- Master station is with SIP protocol, support DC 12V or PoE power supply(external)
- Two-way audio intercom between door station and master station or Tuya APP
- Noise suppression and echo cancellation
- 10.1-inch LCD 1280x800 resolution
- Support TF card,up to 512G
- Built-in 64G SSD
- 2-ch alarm input,1-ch alarm output
- Remote unlocking on Tuya APP

KD8501
IP Video Intercom Kit

Specification

Operating System	Linux
LCD	10.1-inch TFT LCD(1280*800)
Operation Method	Capacitance touch screen
Outdoor Station	Support 4*doorbell/camera
Compression	H265/H264
Record	Support
Storage	Built-in 64GB SSD
TF Card	Support TF Card ,up to 512G
USB Interface	1 × USB 2.0
Audio Output	Built-in speaker
Audio Input	Built-in microphone
Sound Quality	Echo cancellation
APP Support	Tuya APP
Network Interface	1 RJ-45 10/100M self-adaptive
Power Supply	DC/Type-C 12V
Consumption	< 10W
Work Temperature	-10°C ~ +55°C
Dimensions	270mm*165mm*30mm

Application Scenario



Villa



House



Hotel



CBD



Key Features

- 1 master station + 2 vandal-proof IP doorbells + 2 POE cameras
- Master station is with SIP protocol, support DC 12V or PoE power supply(external)
- Two-way audio intercom between door station and master station or Tuya APP
- Noise suppression and echo cancellation
- 10.1-inch LCD 1280x800 resolution
- Support TF card, up to 512G
- Built-in 64G SSD
- 2-ch alarm input, 1-ch alarm output
- Remote unlocking on Tuya APP

DK8254C
IP Video Intercom Kit

Specification

Operating System	Linux
LCD	10.1-inch TFT LCD(1280*800)
Operation Method	Capacitance touch screen
Outdoor Station	Support 4*doorbell/camera
Compression	H265/H264
Record	Support
Storage	Built-in 64GB SSD
TF Card	Support TF Card ,up to 512G
USB Interface	1 × USB 2.0
Audio Output	Built-in speaker
Audio Input	Built-in microphone
Sound Quality	Echo cancellation
APP Support	Tuya APP
Network Interface	1 RJ-45 10/100M self-adaptive
Power Supply	DC/Type-C 12V
Consumption	< 10W
Work Temperature	-10°C ~ +55°C
Dimensions	270mm*165mm*30mm

Application Scenario



Villa



House



Hotel



CBD



Key Features

- 1 master station + 2 plastic IP doorbells
- Master station is with SIP protocol, support DC 12V or PoE power supply(external)
- Two-way audio intercom between door station and master station or Tuya APP
- Noise suppression and echo cancellation
- 10.1-inch LCD 1280x800 resolution
- Support TF card,up to 512G
- Built-in 64G SSD
- 2-ch alarm input,1-ch alarm output
- Remote unlocking on Tuya APP

DK8352P
IP Video Intercom Kit

Specification

Operating System	Linux
LCD	10.1-inch TFT LCD(1280*800)
Operation Method	Capacitance touch screen
Outdoor Station	Support 4*doorbell/camera
Compression	H265/H264
Record	Support
Storage	Built-in 64GB SSD
TF Card	Support TF Card ,up to 512G
USB Interface	1 × USB 2.0
Audio Output	Built-in speaker
Audio Input	Built-in microphone
Sound Quality	Echo cancellation
APP Support	Tuya APP
Network Interface	1 RJ-45 10/100M self-adaptive
Power Supply	DC/Type-C 12V
Consumption	< 10W
Work Temperature	-10°C ~ +55°C
Dimensions	270mm*165mm*30mm

Application Scenario



Villa



House



Hotel



CBD



Key Features

- 1 master station + 2 plastic IP doorbells + 2 POE cameras
- Master station is with SIP protocol, support DC 12V or PoE power supply(external)
- Two-way audio intercom between door station and master station or Tuya APP
- Noise suppression and echo cancellation
- 10.1-inch LCD 1280x800 resolution
- Support TF card, up to 512G
- Built-in 64G SSD
- 2-ch alarm input, 1-ch alarm output
- Remote unlocking on Tuya APP

DK8354P
IP Video Intercom Kit

Specification

Operating System	Linux
LCD	10.1-inch TFT LCD(1280*800)
Operation Method	Capacitance touch screen
Outdoor Station	Support 4*doorbell/camera
Compression	H265/H264
Record	Support
Storage	Built-in 64GB SSD
TF Card	Support TF Card ,up to 512G
USB Interface	1 × USB 2.0
Audio Output	Built-in speaker
Audio Input	Built-in microphone
Sound Quality	Echo cancellation
APP Support	Tuya APP
Network Interface	1 RJ-45 10/100M self-adaptive
Power Supply	DC/Type-C 12V
Consumption	< 10W
Work Temperature	-10°C ~ +55°C
Dimensions	270mm*165mm*30mm

Application Scenario



Villa



House



Hotel



CBD

Wireless Kit

CCDCAM Wireless Kit adopts Wi-Fi 6 technology, which has the characteristics of stable signal, strong anti-interference ability, strong penetration, fast connection speed, and low delay

Wi-Fi 6, as a new generation of high-speed, multi-user, and high-efficiency Wi-Fi technology, has broad application prospects in industry fields such as industrial parks, office buildings, shopping malls, hospitals, airports, and factories.





Key Features

- 1/2.7" 3MP CMOS Sony IMX307 Sensor
- Maximum resolution up to 2304x1296@15fps
- Support Motion Detection Humanoid Detection
- Support the P2P on Android, IOS
- Support two way audio
- Support HTTP/TCP/IP/IPv4/DHCP/NTP/P2P

IPC7236
3MP WIFI Camera

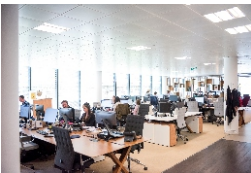
Specification

Image Sensor	1/2.7" 3MP IMX307 CMOS
Min.Illumination	Color : 1Lux , B/W : 0.1Lux
AGC	Auto/Manual
S/N Ratio	≥45dB (AGC OFF)
Day & Night	External control (IR Cut Filter)
OSD	Support
Motion Detection	Support
Humanoid Detection	Support
Protocols	HTTP/TCP/IP/IPv4/DHCP/NTP/P2P
Main Stream	2304×1296@15fps
Sub Stream	640×480
Network Interface	1ch 10/100Base Ethernet , RJ45 interface
Network parameters	Support, 2.4G WI-FI
Power	DC 12V
Work Temperature	-10°C ~50°C
Work Humidity	≤90% RH (non-condensing)

Application Scenario



Family



Office



Shop



Supermarket



4 CH Wireless Kit

Key Features

- 1 master station + 3MP 4 WiFi camera
- Master station is with SIP protocol, support DC 12V or PoE power supply(external)
- Two-way audio intercom between door station and master station or Tuya APP
- Noise suppression and echo cancellation
- 10.1-inch LCD 1280x800 resolution
- Support TF card,up to 512G
- Built-in 64G SSD
- 2-ch alarm input,1-ch alarm output
- Remote unlocking on Tuya APP

DK8354W

4CH Wireless Kit With Touch-Screen

Specification

Operating System	Linux
LCD	10.1-inch TFT LCD(1280*800)
Operation Method	Capacitance touch screen
Outdoor Station	Support 4*doorbell/camera
Compression	H265/H264
Record	Support
Storage	Built-in 64GB SSD
TF Card	Support TF Card ,up to 512G
USB Interface	1 × USB 2.0
Audio Output	Built-in speaker
Audio Input	Built-in microphone
Sound Quality	Echo cancellation
APP Support	Tuya APP
Network Interface	1 RJ-45 10/100M self-adaptive
Power Supply	DC/Type-C 12V
Consumption	< 10W
Work Temperature	-10°C ~ +55°C
Dimensions	270mm*165mm*30mm

Application Scenario



Villa



House



Hotel



CBD



8 CH Wireless kit

Key Features

- 1 master station +3MP 8 WiFi camera
- Master station is with SIP protocol, support DC 12V or PoE power supply(external)
- Two-way audio intercom between door station and master station or Tuya APP
- Noise suppression and echo cancellation
- 10.1-inch LCD 1280x800 resolution
- Support TF card,up to 512G
- Built-in 64G SSD
- 2-ch alarm input,1-ch alarm output
- Remote unlocking on Tuya APP

DK8358W
8CH Wireless Kit With Touch-Screen

Specification

Operating System	Linux
LCD	10.1-inch TFT LCD(1280*800)
Operation Method	Capacitance touch screen
Outdoor Station	Support 4*doorbell/camera
Compression	H265/H264
Record	Support
Storage	Built-in 64GB SSD
TF Card	Support TF Card ,up to 512G
USB Interface	1 × USB 2.0
Audio Output	Built-in speaker
Audio Input	Built-in microphone
Sound Quality	Echo cancellation
APP Support	Tuya APP
Network Interface	1 RJ-45 10/100M self-adaptive
Power Supply	DC/Type-C 12V
Consumption	< 10W
Work Temperature	-10°C ~ +55°C
Dimensions	270mm*165mm*30mm

Application Scenario



Villa



House



Hotel



CBD

Underwater Camera

IP Underwater Camera

AHD Underwater Camera

CCDCAM underwater camera is with strict seawater rust testing, all materials and craftwork are unique. Extensive used in swimming pool, marine investigation, aquaculture, coast defense. For example, 2008 Beijing Olympic Games swimming pool, 2010 Guangzhou Asian Games, 2011 Shenzhen University Games, etc... are used our underwater camera.





Key Features

- 1/2.7"2MP Sony CMOS Sensor
- 1920x1080@30fps
- Support Onvif
- 2.5,2.8,3.6mm fixed lens optional
- Material :Stainless steel 316L
- Underwater depth 30m Max
- IP68 POE

EC-IP3863U
2MP Mini POE IP Underwater Camera

Specification

Image Sensor	1/2.7" CMOS
Effective Pixels	1920x1080
IR LED	Without
Min.Illumination	Color 0.5Lux/F1.4
Electronic Shutter	1/50(1/60)s-1/100,000s
Lens	2.5 / 2.8/ 3.6mm Lens
Lens Mount	M12
Material	Stainless steel 316L
Frame Rate	1920x1080/1280x720@30fps
Video Output	RJ45
Network Interface	10Base-T/100Base-TX
Work Temperature	-10°C ~ +60°C
Protection Level	IP68
Power Supply	POE IEEE802.3at/af
Size	Ø 30 x 92mm
Cable	CAT6
Net Weight	N.W.0.3kg +cable 0.12kg/m

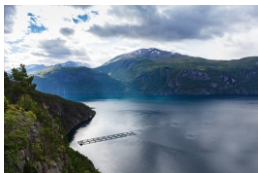
Application Scenario



Swimming pool



Marine investigation



Aquaculture



Coast defence



Key Features

- 1/2.7" 2MP CMOS Sensor
- 1920×1080@30fps
- Support Onvif
- 2.1,3.6,4.2mm fixed lens optional
- White light Distance: 5m(EC-IP3856WU)
- Multiple network monitoring:Web viewer,CMS
- Underwater depth 100m Max
- IP68, POE

EC-IP3856U/EC-IP3856WU
2MP POE IP Underwater Camera

Specification	EC-IP3856U	EC-IP3856WU
Image Sensor	1/2.7" CMOS	
Effective Pixels	1920x1080	
Light Distance	NO	5m
Min.Illumination	Color 0.5Lux/F1.4	
Electronic Shutter	1/50(1/60)s-1/100,000s	
Lens	2.1 / 3.6/ 4.2mm Lens	
Lens Mount	M12	
Material	Stainless steel 316L	
Frame Rate	1920x1080@30fps	
Video Output	RJ45	
Network Interface	10Base-T/100Base-TX	
Work Temperature	-10°C ~ +60°C	
Protection Level	IP68	
Power Supply	POE IEEE802.3at/af	
Size	Ø 63 x 68mm	
Cable	CAT6	
Net Weight	N.W.0.65kg +cable 0.12kg/m	

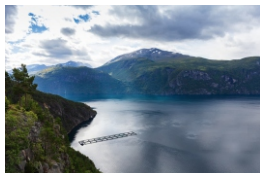
Application Scenario



Swimming pool



Marine investigation



Aquaculture



Coast defence



Key Features

EC-IP3810

- 1/3" 2MP CMOS Sensor
- 1920×1080@30fps
- 2.1,2.8,3.6mm fixed lens optional

EC-IP5810

- 1/2.7" 5MP CMOS Sensor
- 2592x1944@15fps
- 2.8-12mm auto focus lens
- White light Distance: 10m
- Support Onvif
- Multiple network monitoring:Web viewer,CMS
- Underwater depth 10m Max;
- IP68, POE

EC-IP3810/EC-IP5810
2MP/5MP POE IP Underwater Camera/White Light

Specification	EC-IP3810	EC-IP5810
Image Sensor	2MP 1/3",	5MP 1/2.7" CMOS
Effective Pixels	1920x1080	2592x1944
Light Distance	10m	
Min.Illumination	Color 0.5Lux/F1.4	Color 0.1Lux/F1.4
Electronic Shutter	1/50(1/60)s-1/100,000s	
Lens	2.1 / 2.8/ 3.6mm Lens	2.8-12mm auto focus
Lens Mount	M12	
Material	Stainless steel 304L	
Frame Rate	1920x1080@30fps	2592x1944@15fps
Video Output	RJ45	
Network Interface	10Base-T/100Base-TX	
Work Temperature	-10°C ~ +60°C	
Protection Level	IP68	
Power Supply	POE IEEE802.3at/af	
Size	Ø 145 x 110mm	
Cable	CAT6	
Net Weight	N.W:0.7kg +cable 0.12kg/m	

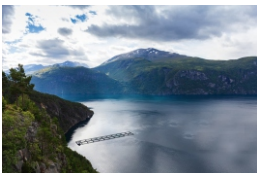
Application Scenario



Swimming pool



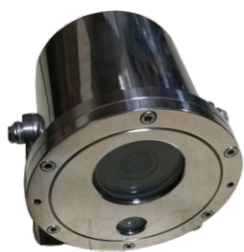
Marine investigation



Aquaculture



Coast defence



Key Features

- 1/3" 4MP CMOS Sensor
- 2560×1440@25fps
- Support Onvif
- 2.8-12mm auto focus lens
- White light Distance: 15m
- Dual POE IEEE802.3af; End-span(1,2+/3,6-) and Mid-span(4,5+/7,8-)
- Multiple network monitoring:Web viewer,CMS
- Underwater depth 50m Max
- IP68

EC-IP4050U
4MP POE IP Underwater Camera/White Light

Specification

Image Sensor	1/3" CMOS
Effective Pixels	2560x1440
Light Distance	15m
Min.Illumination	Color 0.6Lux/F1.4
Electronic Shutter	1/50(1/60)s-1/100,000s
Lens	Focus f=2.8-12mm
Lens Mount	M12
Material	Stainless steel 316L
Frame Rate	2560x1440@25fps
Video Output	RJ45
Network Interface	10Base-T/100Base-TX
Work Temperature	-10°C ~ +60°C
Protection Level	IP68
Power Supply	Dual POE
Size	Ø 158 x 144mm
Cable	CAT6
Net Weight	N.W:2.6kg +cable 0.12kg/m

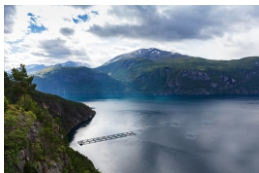
Application Scenario



Swimming pool



Marine investigation



Aquaculture



Coast defence



Key Features

- 1/2.7" 5MP CMOS Sensor
- 2592×1944@15fps
- Support Onvif
- f=5-90mm 18X optical zoom
- Max.128 preset,8 cruise routes,Preset position dwell time adjustable 2-10sec
- With power off memory function cleaning scraper
- Pan:360°continuously; Pan 0.1-30°/ses,Tilt 0.1~30°/ecs
- White light Distance: 30m (ir leds optional)
- Underwater depth 30m Max
- IP68, POEeeph 10m Max;

EC-IP6030U

5MP POE 7" PTZ IP Underwater Camera/White Light

Specification

Image Sensor	1/2.7" CMOS
Effective Pixels	2592x1944
Light Distance	30m
Min.Illumination	Color 0.1Lux/F1.4
Electronic Shutter	1/50(1/60)s-1/100,000s
Lens	Focus f=5-90mm(F1.8-3.2) 18X optical zoom
Lens Mount	M12
Material	Stainless steel 316L
Frame Rate	2592x1944@15fps
Video Output	RJ45
Network Interface	10Base-T/100Base-TX
Work Temperature	-10°C ~ +60°C
Protection Level	IP68
Power Supply	POE IEEE802.3at/af
Size	320 x 240 x 420mm
Cable	CAT6
Net Weight	N.W.19kg +cable 0.12kg/m

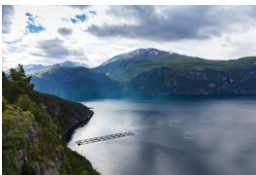
Application Scenario



Swimming pool



Marine investigation



Aquaculture



Coast defence



Key Features

IP-3855U

- 1/2.7" 2MP CMOS Sensor
- 1920×1080@30fps

IP-5855U

- 1/2.7" 5MP CMOS Sensor
- 2592×1944@15fps
- Support onvif
- Focus f=3.8-38mm(F1.8-3.2)10X10 zoom
- Max.128 preset,privacy covering zone:4 areas
- Preset speed:Max.360°/s
- Pan: 360°continuously; Tilt: 180°auto flip on/off
- Underwater depth 100m Maxeprth 50m Max
- IP68

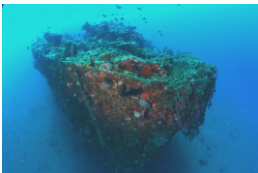
EC-IP3855U/EC-IP5855U
2MP/5MP 4" PTZ POE IP Underwater Camera

Specification	IP-3855U	IP-5855U
Image Sensor	1/2.7" CMOS	
Effective Pixels	1920x1080	2592x1944
IR LED	Without	
Min.Illumination	Color 0.5Lux/F1.4,	Color 0.1Lux/F1.4
Electronic Shutter	1/50(1/60)s-1/100,000s	
Lens	Focus f=3.8-38mm(F1.8-3.2)10X10 zoom	
Lens Mount	M12	
Material	Stainless steel 316L	
Frame Rate	1920x1080@30fps	2592x1944@15fps
Video Output	RJ45	
Network Interface	10Base-T/100Base-TX	
Work Temperature	-10°C ~ +60°C	
Protection Level	IP68	
Power Supply	POE IEEE802.3at/af	
Size	Ø 160 x 150mm	
Cable	CAT6	
Net Weight	N.W.5kg +cable 0.12kg/m	

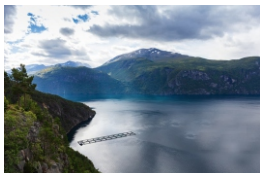
Application Scenario



Swimming pool



Marine investigation



Aquaculture



Coast defence



Key Features

EC-IP4655U

- 1/3" 4MP CMOS Sensor
- 2560×1440@60fps

EC-IP8655U

- 1/2.9" 8MP CMOS Sensor
- 3840×2160@60fps
- Support onvif
- Focus f=2.7-14mm(F1.8-3.2)
- 5X optical zoom
- Pan: 360°continuously; Tilt: 180°auto flip on/off
- Underwater depth 100m Max
- IP68, POE

EC-IP4655U/EC-IP8655U

4MP/4K 60FPS POE IP Underwater Camera

Specification	EC-IP4655U	EC-IP8655U
Image Sensor	4MP 1/3"	8MP 1/2.9" CMOS
Effective Pixels	2560x1440	3840x2160
IR LED	Without	
Min.Illumination	Color 0.4Lux/F1.4	Color 0.2Lux/F1.4
Electronic Shutter	1/50(1/60)s-1/100,000s	
Lens	Focus f=2.7-14mm(F1.8-3.2) 5X optical zoom	
Lens Mount	M12	
Material	Stainless steel 316L	
Frame Rate	2560x1440@60fps	3840x2160@60fps
Video Output	RJ45	
Network Interface	10Base-T/100Base-TX	
Work Temperature	-10°C ~ +60°C	
Protection Level	IP68	
Power Supply	POE IEEE802.3at/af	
Size	Ø 160 x 150mm	
Cable	CAT6	
Net Weight	N.W.5kg +cable 0.12kg/m	

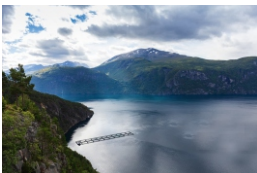
Application Scenario



Swimming pool



Marine investigation



Aquaculture



Coast defence



Key Features

- 1/2.7" 5MP CMOS Sensor
- 2592×1944@15fps
- Support Onvif
- Focus f=2.8-12mm automatic zoom lens
- With cleaning scraper
- White light Distance: 30m (ir leds optional)
- Underwater depth 60m Max
- IP68, POE

EC-IP8060U

5MP POE IP Underwater Camera/White Light

Specification

Image Sensor	1/2.7" CMOS
Effective Pixels	2592x1944
Light Distance	30m
Min.Illumination	Color 0.1Lux/F1.4
Electronic Shutter	1/50(1/60)s-1/100,000s
Lens	Focus f=2.8-12mm
Lens Mount	M12
Material	Stainless steel 316L
Frame Rate	2592x1944@15fps
Video Output	RJ45
Network Interface	10Base-T/100Base-TX
Work Temperature	-10°C ~ +60°C
Protection Level	IP68
Power Supply	POE IEEE802.3at/af
Size	370 x 140 x170mm
Cable	CAT6
Net Weight	N.W.13kg +cable 0.12kg/m

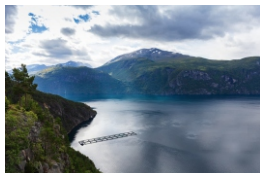
Application Scenario



Swimming pool



Marine investigation



Aquaculture



Coast defence



Key Features

- 1/2.9" 8MP CMOS Sensor
- 3840×2160@30fps
- Support Onvif
- Focus f=2.7-14mm(F1.8-3.2)5X Optical zoom
- Max.128 preset,privacy covering zone:4 areas
- Preset speed:Max.360°/s
- Pan: 360°continuously; Tilt: 180°auto flip on/off
- Underwater depth 100m Max

EC-IP8355U
4K 4" PTZ POE IP Underwater Camera

Specification

Image Sensor	1/2.9" CMOS
Effective Pixels	3840x2160
IR LED	Without
Min.Illumination	Color 0.2Lux/F1.4
Electronic Shutter	1/50(1/60)s-1/100,000s
Lens	Focus f=2.7-14mm(F1.8-3.2) 5X optical zoom
Lens Mount	M12
Material	Stainless steel 316L
Frame Rate	3840x2160@30fps
Video Output	RJ45
Network Interface	10Base-T/100Base-TX
Work Temperature	-10°C ~ +60°C
Protection Level	IP68
Power Supply	POE IEEE802.3at/af
Size	Ø 160 x 150mm
Cable	CAT6
Net Weight	N.W.5kg +cable 0.12kg/m

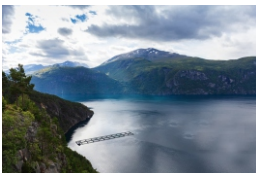
Application Scenario



Swimming pool



Marine investigation



Aquaculture



Coast defence



Key Features

- IP-3855U**
- 1/3 sony CCD,4140+673 Double board
 - 704x576 Pixels
- EC-AH2056U**
- 1/2.7" 2MP CMOS Sensor
 - 1920x1080@25/30fps
 - 2.1,3.6,4.2mm lens optional
 - Cable Standard configuration:5m
 - Housing material: stainless steel 316L
 - Underwater depth: 100m Max

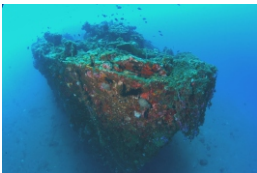
EC-3856U/EC-AH2056U
CCD 700TVL Analog/AHD 2MP Underwater Camera

Specification	EC-3856U	EC-AH2056U
Image Sensor	1/2.3" CCD	1/2.7" CMOS
Effective Pixels	704x576	1920x1080
IR LED	Without	
Min.Illumination	Color 0.5ux/F1.4,	Color 0.1Lux/F1.4
Electronic Shutter	4/25s - 1/45000s	
Lens	2.1,3.6,4.2mm optional	
Lens Mount	M12	
Material	Stainless steel 316L	
Frame Rate	25fps,PAL	30fps,NTSC
Video Output	Analog	AHD
Cable Standard	5m	
Glass	Toughened safety (ESG)	
Work Temperature	-10°C ~ +60°C	
Protection Level	IP68	
Power Supply	DC 12V	
Size	Ø 63 x 68mm	
Cable	BNC	
Net Weight	N.W.0.65kg +cable 0.12kg/m	

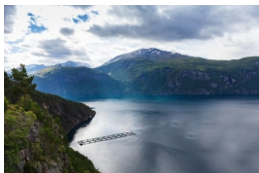
Application Scenario



Swimming pool



Marine investigation



Aquaculture



Coast defence



Key Features

- 1/2.7" 5MP CMOS Sensor
- 5MP 2592*1944,4 IN 1 (AHD/CVI/TVI/CVBS)
- Focus f=3.8-38mm(F1.8-3.2)
- 10X optical zoom,10X digital zoom
- Max.128 preset,privacy covering zone:4 areas
- Preset speed:Max.360°/s
- Pan: 360°continuously; Tilt: 180°auto flip on/off
- Underwater depth 100m Max

EC-5855U
AHD 5MP 4" PTZ Underwater Camera

Specification

Image Sensor	1/2.7" CMOS
Effective Pixels	2592x1944
IR LED	Without
Min.Illumination	Color 0.2Lux/F1.4
Electronic Shutter	1/50(1/60)s-1/100,000s
Lens	Focus f=3.8-38mm(F1.8-3.2) 10X digital zoom
Lens Mount	M12
Material	Stainless steel 316L
Frame Rate	25fps,PAL/30fps,NTSC
Video Output	AHD/CVI/TVI/CVBS
Preset	128 preset max,privacy covering zone:4 areas
Angle	Pan:360°continuously; Tilt:180°auto flip on/off
Work Temperature	-10°C ~ +60°C
Protection Level	IP68
Power Supply	DC12V
Size	Ø 160 x 150mm
Cable	BNC
Net Weight	N.W.5kg +cable 0.12kg/m

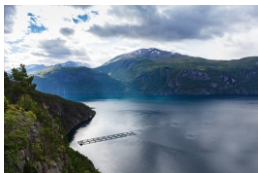
Application Scenario



Swimming pool



Marine investigation



Aquaculture



Coast defence

Mobile DVR System

Mobile Video Recorder Mobile Camera

CCDCAM Mobile Video Recorder is a dedicated DVR product for vehicle video and audio monitoring with embedded Linux operating system. With the functions of video and audio decoding, 3G/4G wireless network transmission, satellite positioning, data security storage, SSD vibration reduction protection, and provide flexible channel selection and coding schemes, especially applied to the video and audio monitoring needs of various buses, passenger buses, school buses, taxis, coach cars, muck trucks and other vehicles. The equipment has perfect and stable performance, with small size, low power consumption, easy installation and maintenance.



Key Features

- 4ch of analog video and audio input, each channel up to 1080P encoding
- With 1ch CVBS video output, 1ch audio output
- With 1ch VGA video output interface, max resolution up to 1920*1080
- It can access 1*M2 SSD and 1*SD card simultaneously (SD card as a spare hard disk)
- Built-in 3G/4G wireless module, providing flexible wireless transmission
- Built-in high-sensitivity satellite positioning module, supporting extended BDS
- With information collection interface, it can collect the driver's turn left, turn right, brake, reverse, etc
- Wide range power supply (DC +9V to +36V)

MD62104S
4CH Mobile Video Recorder

Specification

Operating System	Embedded Linux operating system
Video Compression	H.265
Audio Compression	ADPCM
Encode	1080P@25FPS/352 x 288@1-10FPS
Playback	4ch x 1080P@25FPS
Video Input/Output	4ch analog/1 x cvbs,1 x VGA
Audio Input/Output	4ch/1ch
Wireless Network	3G/4G
Positioning	GPS,BDS
Power Supply	DC 9V-36V
Working Temperature/Humidity	-10 °C to +55 °C,10% to 90%
Storage	1× SSD with M2 interface
Driving information collection	4ch high level signal inputs
Alarm input / output	4ch, switch trigger ,2ch, switch output
Network Interface	1× RJ45 100M
USB Interface	2 × USB 2.0
Serial Port	1× RS232 (debugging)
Wright/Dimensions (W×D×H)	1.58kg/200x150x80mm

Application Scenario



Logistics



Oil&Gas



Taxi



School Bus



Key Features

- 8ch of analog video and audio input, each channel up to 1080P encoding
- With 1ch CVBS video output, 1ch audio output
- With 1ch VGA video output interface, max resolution up to 1920*1080
- It can access 1*M2 SSD and 1*SD card simultaneously (SD card as a spare hard disk)
- Built-in 3G/4G wireless module, providing flexible wireless transmission
- Built-in high-sensitivity satellite positioning module, supporting extended BDS
- With information collection interface, it can collect the driver's turn left, turn right, brake, reverse, etc
- Wide range power supply (DC +9V to +36V)

MD62108S
8CH Mobile Video Recorder

Specification

Operating System	Embedded Linux operating system
Video Compression	H.265
Audio Compression	ADPCM
Encode	1080P@20FPS/352 x 288@1-10FPS
Playback	4ch x 1080P@25FPS
Video Input/Output	8ch analog/1 x cvbs,1 x VGA
Audio Input/Output	8ch/1ch
Wireless Network	3G/4G
Positioning	GPS,BDS
Power Supply	DC 9V-36V
Working Temperature/Humidity	-10 °C to +55 °C,10% to 90%
Storage	1× SSD with M2 interface
Driving information collection	4ch high level signal inputs
Alarm input / output	4ch, switch trigger ,2ch, switch output
Network Interface	1× RJ45 100M
USB Interface	2 × USB 2.0
Serial Port	1× RS232 (debugging)
Wright/Dimensions (W×D×H)	1.68kg/200x150x80mm

Application Scenario



Logistics



Oil&Gas



Taxi



School Bus



Key Features

- Up to 2MP high resolution
- 920 x 1080@25fps/1920 x 1080@30fps video
- PAL/NTSC video format
- F2.8 mm fixed lens
- Auto adjusting 2D-DNR/3D-DNR/D-WDR
- DC 12V
- Day/Night mode
- Up to 10m IR range
- IP66 weather-proof protection
- Seismic structure design

MC5210/MC5216/MC5218
2MP Weatherproof/Waterproof Mobile AHD Camera

Specification	MC5210/MC5216/MC5218
Image Sensor	1/2.8" 2MP CMOS Sensor
Effective Resolution	1920(H) x 1080(V)
Video Format	PAL/NTSC
Frame Rate	1920 x 1080@25fps/1920 x 1080@30fps
Min.Illumination	0.0001Lux@(F1.2,AGC ON),0LUX with IR
Day&Night	IR cut filter
S/N Ratio	More than 50 dB
IR	12PCS IR LED
IR Range	Up to 10m
Lens	F2.8mm fixed lens
Horizontal Angle of View	115°(D)
Tilt Adjusting	0-90 Degree
Power Supply	DC 12V ±10%,160mA
Dimensions	Ø69 x 55.5 mm
Net Weight	180g
Operational Temperature	-20 ~ +60 ° C
Operational Humidity	20 ~ 80%
Video Interface	Aircraft Round Connector Plug

Application Scenario



Logistics



Oil&Gas



Taxi



School Bus

IP Zoom Module

CCDCAM IP Zoom Module has an efficient automatic synchronous focusing algorithm, enabling the product to have the ability to synchronize and zoom through the entire process, ensuring that images are always clear.

Suitable for intelligent robots, intelligent machine vision, and intelligent security industries.



Key Features

- 1/2.8" Sony IMX307 CMOS Sensor
- With 10X optical zoom capability
- Color : 0.1Lux@F1.2 B/W : 0.01Lux@F1.2
- Smart 2D/3D noise reduction algorithms, AE exposure algorithms
- Support H.265/H.264 Main profile/M-JPEG encoded
- Maximum resolution up to 1920x1080@30fps
- Support for motion detection zone and privacy zone settings
- Support 254 preset positions, 4 preset positions for cruise and horizontal scanning
- Support standard ONVIF protocol

HT7210AM
2MP Network 10X Optical Zoom Module

Specification

Image Sensor	1/2.8" 2MP IMX307 CMOS
WDR	68dB
S/N Ration	≥45dB (AGC OFF)
Exposure Mode	Program mode, shutter mode
Electronic Shutter	1/2 - 1/20,000s , Slow shutter support
D/N Mode	Auto ICR filter, fixed color, external
Focus Distance	4.7mm -47mm (F1.6-F2.5)
Field of View Angle	70.9° (near) / 7.1° (far)
Main Stream	1920x1080 /1280x960/1280x720@30fps
Sub Stream	640×480/480x360/352×288@30fps
SD Storage	TF card storage (optional)
Network Interface	1ch 10/100Base Ethernet , RJ45 interface
Power	DC12V
Size	63x49x39mm
Work Temperature	-30°C ~60°C
Work Humidity	10%-90% RH (non-condensing)

Application Scenario



Government



Square



School



CBD



Key Features

- 1/2.8" Sony IMX335 CMOS Sensor
- With 10X optical zoom capability
- Color : 0.05Lux@F1.2 B/W : 0.01Lux@F1.2
- Smart 2D/3D noise reduction algorithms, AE exposure algorithms
- Support H.265/H.264 Main profile/M-JPEG encoded
- 2592x1944 @15fps,2592x1520@22fps, 2304 x1296@30fps
- Support for motion detection zone and privacy zone settings
- Support 254 preset positions, 4 preset positions for cruise and horizontal scanning
- Support standard ONVIF protocol

HT7510AM
5MP Network 10X Optical Zoom Module

Specification

Image Sensor	1/2.8" 5MP IMX335 CMOS
WDR	73.7dB
S/N Ration	≥50dB (AGC OFF)
Exposure Mode	Program mode, shutter mode
Electronic Shutter	1/2 - 1/20,000s , Slow shutter support
D/N Mode	Auto ICR filter, fixed color, external
Focus Distance	4.7mm -47mm (F1.6-F2.5)
Field of View Angle	70.9° (near) / 7.1° (far)
Main Stream	2592x1944@15fps,2592x1520@22fps
Sub Stream	640×480/480x360/352×288@30fps
SD Storage	TF card storage (optional)
Network Interface	1ch 10/100Base Ethernet , RJ45 interface
Power	DC12V
Size	63x49x39mm
Work Temperature	-30°C ~60°C
Work Humidity	10%-90% RH (non-condensing)

Application Scenario



Government



Square



School



CBD



Key Features

- 1/2.8" Sony IMX335 CMOS Sensor
- With 36X optical zoom capability
- Color : 0.05Lux@F1.2 B/W : 0.01Lux@F1.2
- Smart 2D/3D noise reduction algorithms, AE exposure algorithms
- Support H.265/H.264 Main profile/M-JPEG encoded
- Max resolution up to 2592x1944@30fps
- Support for motion detection zone and privacy zone settings
- Support 254 preset positions, 4 preset positions for cruise and horizontal scanning
- Support standard ONVIF protocol

HT7536D
5MP Network 36X Optical Zoom Module

Specification

Image Sensor	1/2.8" 5MP IMX335 CMOS
WDR	80dB
S/N Ration	≥50dB (AGC OFF)
Exposure Mode	Program mode, shutter mode
Electronic Shutter	1/2 - 1/20,000s , Slow shutter support
D/N Mode	Auto ICR filter, fixed color, external
Focus Distance	4.6mm-167mm(F1.6~F4.8)
Field of View Angle	61.2° (near) /2.32° (far)
Main Stream	2592x1944@30fps
Sub Stream	640×480/480x360/352×288@30fps
SD Storage	TF card storage (optional)
Network Interface	1ch 10/100Base Ethernet , RJ45 interface
Power	DC 12V
Size	97x62x51mm
Work Temperature	-30°C ~60°C
Work Humidity	10%-90% RH (non-condensing)

Application Scenario



Government



Square



School



CBD



Key Features

- 1/2.8" 2MP CMOS Sony IMX307
- Max resolution up to 1920x1080@30fps
- Color : 0.05Lux@F1.2 B/W : 0.01Lux@F1.2
- 10x optical fast focusing with clear images
- Support two way audio
- Support multiple night vision modes with dual light
- Support standard ONVIF/RTSP/Hikvision/XM
- Provides Linux, Windows SDK development kits, and CGI protocol

IM20A02-5X
2MP 5X Automatic zoom network module

Specification

Image Sensor	1/2.8" 2MP IMX307 CMOS
WDR	50dB
S/N Ration	≥50dB (AGC OFF)
Exposure Mode	Program mode, shutter mode
Electronic Shutter	1/2 - 1/20,000s , Slow shutter support
D/N Mode	Auto ICR filter, fixed color, external
Focus Distance	2.8mm -12mm (F1.7-F3.0)
Field of View Angle	128° (near) / 30° (far)
Main Stream	1920x1080@30fps
Sub Stream	640×480/480x360/352×288@30fps
SD Storage	TF card storage (optional)
Network Interface	1ch 10/100Base Ethernet , RJ45 interface
Power	DC12V
Size	38x44x60mm
Work Temperature	-30°C ~60°C
Work Humidity	10%-90% RH (non-condensing)

Application Scenario



Government



Square



School



CBD



Key Features

- 1/2.8" 2MP CMOS Sony IMX307
- Max resolution up to 1920x1080@30fps
- Color : 0.05Lux@F1.2 B/W : 0.01Lux@F1.2
- 10x optical fast focusing with clear images
- Support two way audio
- Support multiple night vision modes with dual light
- Support standard ONVIF/RTSP/Hikvision/XM
- Provides Linux, Windows SDK development kits, and CGI protocol

IM20A02-10X
2MP 10X Automatic zoom network module

Specification

Image Sensor	1/2.8" 2MP IMX307 CMOS
WDR	50dB
S/N Ration	≥50dB (AGC OFF)
Exposure Mode	Program mode, shutter mode
Electronic Shutter	1/2 - 1/20,000s , Slow shutter support
D/N Mode	Auto ICR filter, fixed color, external
Focus Distance	5mm-50mm(F2.36~F2.4)
Field of View Angle	72° (near) /7° (far)
Main Stream	1920x1080@30fps
Sub Stream	640×480/480x360/352×288@30fps
SD Storage	TF card storage (optional)
Network Interface	1ch 10/100Base Ethernet , RJ45 interface
Power	DC 12V
Size	38x44x60mm
Work Temperature	-30°C ~60°C
Work Humidity	10%-90% RH (non-condensing)

Application Scenario



Government



Square



School



CBD



Key Features

- 1/2.8" 5.0MP CMOS Sony IMX335
- Max resolution up to 2592x1944@25/30fps
- Color : 0.05Lux@F1.2 B/W : 0.01Lux@F1.2
- 10x optical fast focusing with clear images
- Support two way audio
- Support multiple night vision modes with dual light
- Support standard ONVIF/RTSP/Hikvision/XM
- Provides Linux, Windows SDK development kits, and CGI protocol

IM50A01-5X
5MP 5X Automatic zoom network module

Specification

Image Sensor	1/2.8" 5MP IMX335 CMOS
WDR	50dB
S/N Ration	≥50dB (AGC OFF)
Exposure Mode	Program mode, shutter mode
Electronic Shutter	1/2 - 1/20,000s , Slow shutter support
D/N Mode	Auto ICR filter, fixed color, external
Focus Distance	2.8mm -12mm (F1.7-F3.0)
Field of View Angle	128° (near) / 30° (far)
Main Stream	2592X1944/1080P/720P@30fps
Sub Stream	640×480/480x360/352×288@30fps
SD Storage	TF card storage (optional)
Network Interface	1ch 10/100Base Ethernet , RJ45 interface
Power	DC12V
Size	38x44x60mm
Work Temperature	-30°C ~60°C
Work Humidity	10%-90% RH (non-condensing)

Application Scenario



Government



Square



School



CBD



Key Features

- 1/2.8" 2MP CMOS Sony IMX307
- Max resolution up to 2592x1944 @25/30fps
- Color : 0.05Lux@F1.2 B/W : 0.01Lux@F1.2
- 10x optical fast focusing with clear images
- Support two way audio
- Support multiple night vision modes with dual light
- Support standard ONVIF/RTSP/Hikvision/XM
- Provides Linux, Windows SDK development kits, and CGI protocol

IM50A01-10X

5MP 10X Automatic zoom network module

Specification

Image Sensor	1/2.8" 5MP IMX335 CMOS
WDR	50dB
S/N Ration	≥50dB (AGC OFF)
Exposure Mode	Program mode, shutter mode
Electronic Shutter	1/2 - 1/20,000s , Slow shutter support
D/N Mode	Auto ICR filter, fixed color, external
Focus Distance	5mm-50mm(F2.36~F2.4)
Field of View Angle	72° (near) /7° (far)
Main Stream	2592X1944/1080P/720P@30fps
Sub Stream	640×480/480×360/352×288@30fps
SD Storage	TF card storage (optional)
Network Interface	1ch 10/100Base Ethernet , RJ45 interface
Power	DC 12V
Size	38x44x60mm
Work Temperature	-30°C ~60°C
Work Humidity	10%-90% RH (non-condensing)

Application Scenario



Government



Square



School



CBD

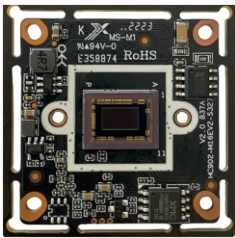
IP Module

CCDCAM IP Camera Module use low illumination image sensor, which provides excellent low illumination performance and clearer and more detailed images, making it suitable for various scenarios.

Supports advanced H.265 Main profile encoding technology. With the same image quality, the compressed code stream is twice that of H.264 encoding, enabling lower bit rates and higher definition image quality. At the same time, this product is compatible with H.264/MJPEG encoding, and can be accessed to mainstream H.264 encoding back-end devices on the industry.

More expansion function interfaces are reserved. through expansion board, IO alarms, SD cards, and corresponding functions can be supported, and users can adjust themselves according to their needs.

Good protocol compatibility, supports the standard ONVIF protocol, and can provide a standard SDK for quick integration by customers.



Key Features

- 1/2.8" 2MP Sony STARVIS IMX307LQR CMOS
- Maximum resolution up to 1920x1080@30fps
- True Day/Night, 3D DNR, Digital WDR
- Support Motion Detection
- Support the P2P on Android, IOS
- Support two way audio
- Support ONVIF
- Support TCP/IP/HTTP/NTP/DHCP/SMTP/RTSP

IM20A01
2MP Low-Illumination HD Network Camera Module

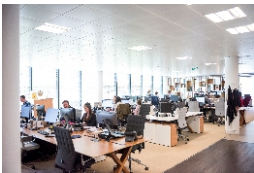
Specification

Image Sensor	1/2.8" 2MP Sony STARVIS IMX307LQR CMOS
Min.Illumination	Color : 0.1Lux , B/W : 0.01Lux
AGC	Auto/Manual
S/N Ratio	≥45dB (AGC OFF)
Shutter Speed	1/2 - 1/20,000s , Slow shutter support
Wide Dynamic Range	Digital WDR
Exposure Mode	Auto/Manual/shutter mode
White Balance	Auto/Manual /ATW/Indoor/Outdoor/ lamp
Day & Night	External control (IR Cut Filter)
Main Stream	1920×1080/1280x960/1280x720@30fps
Sub Stream	640×480/480x360/352×288/176×144@30fps
Network Interface	1ch 10/100Base Ethernet , RJ45 interface
Power	DC 12V
Size	32x32mm
Work Temperature	-10°C ~50°C
Work Humidity	≤90% RH (non-condensing)

Application Scenario



Family



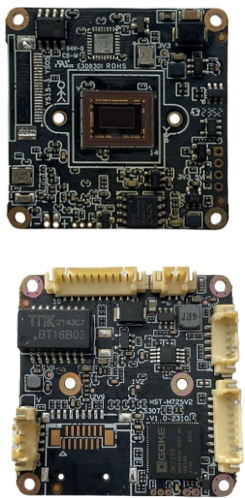
Office



Shop



Supermarket



Key Features

- 1/2.8" 2MP Sony STARVIS IMX307LQR CMOS
- Maximum resolution up to 1920x1080@30fps
- True Day/Night, 3D DNR, Digital WDR
- Support humanoid detection motion detection
- Support two way audio, Built-in audio amplifier function
- Support ONVIF and XM protocol
- Support TCP/IP/HTTP/NTP/DHCP/SMTP/RTSP
- Open SDK(Linux,Windows), CGI,easily to be integrated with other digital systems
- Support OPENIPC development

IM20A02
2MP Low-Illumination HD Network Camera Module

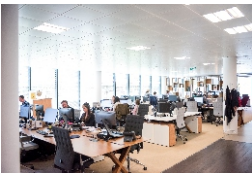
Specification

Image Sensor	1/2.8" 2MP Sony STARVIS IMX307LQR CMOS
Min.Illumination	Color : 0.003Lux , B/W : 0.0005Lux
AGC	Auto/Manual
S/N Ratio	≥45dB (AGC OFF)
Shutter Speed	1/2 - 1/20,000s , Slow shutter support
Wide Dynamic Range	Digital WDR
Exposure Mode	Auto/Manual/shutter mode
White Balance	Auto/Manual /ATW/Indoor/Outdoor/ lamp
Day & Night	External control (IR Cut Filter)
Light Control	Support IR/White/dual light
Amplifier	Built-in amplifier
Main Stream	1920×1080/1280x960/1280x720@30fps
Sub Stream	640×480/480x360/352×288/176×144@30fps
Network Interface	1ch 10/100Base Ethernet , RJ45 interface
Power	DC 12V
Size	38x38mm
Work Temperature	-10°C ~50°C
Work Humidity	≤90% RH (non-condensing)

Application Scenario



Family



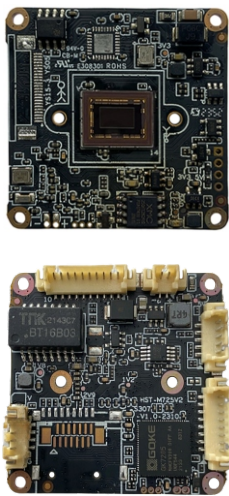
Office



Shop



Supermarket



Key Features

- 1/2.8" 2MP Sony STARVIS IMX307LQR CMOS
- Support ture WDR,1920x1080@60fps (WDR OFF),1920x1080@30fps(WDR ON)
- True Day/Night, 3D DNR, Digital WDR
- Support humanoid detection motion detection
- Support two way audio, Built-in audio amplifier function
- Support ONVIF and XM protocol
- Support TCP/IP/HTTP/NTP/DHCP/SMTP/RTSP
- Open SDK(Linux,Windows), CGI,easily to be integrated with other digital systems
- Support OPENIPC development

IM20A03
2MP Low-Illumination HD Network Camera Module

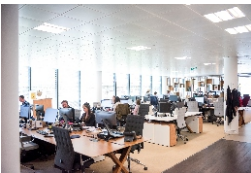
Specification

Image Sensor	1/2.8" 2MP Sony STARVIS IMX307LQR CMOS
Min.Illumination	Color : 0.003Lux , B/W : 0.0005Lux
AGC	Auto/Manual
S/N Ratio	≥45dB (AGC OFF)
Shutter Speed	1/2 - 1/20,000s , Slow shutter support
Wide Dynamic Range	Ture WDR
Exposure Mode	Auto/Manual/shutter mode
White Balance	Auto/Manual /ATW/Indoor/Outdoor/ lamp
Day & Night	External control (IR Cut Filter)
Light Control	Support IR/White/dual light
Amplifier	Built-in amplifier
Main Stream	1920×1080@60fps (WDR OFF)
Sub Stream	640×480/480x360/352×288/176×144@30fps
Network Interface	1ch 10/100Base Ethernet , RJ45 interface
Power	DC 12V
Size	38x38mm
Work Temperature	-10°C ~50°C
Work Humidity	≤90% RH (non-condensing)

Application Scenario



Family



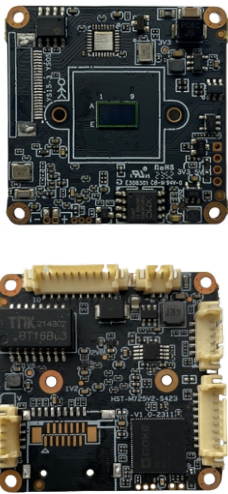
Office



Shop



Supermarket



Key Features

- 1/2.7" 4MP GC4023 CMOS
- Maximum resolution up to 2560x1440@30fps
- True Day/Night, 3D DNR, Digital WDR
- Support humanoid detection motion detection
- Support two way audio, Built-in audio amplifier function
- Support ONVIF and XM protocol
- Support TCP/IP/HTTP/NTP/DHCP/SMTP/RTSP
- Open SDK(Linux,Windows), CGI,easily to be integrated with other digital systems
- Support OPENIPC development

IM40A01

4MP HD Network Camera Module

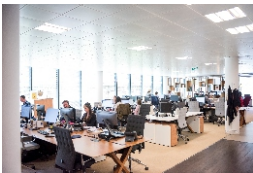
Specification

Image Sensor	1/2.7" 4MP GC4023 CMOS
Min.Illumination	Color : 0.05Lux , B/W : 0.005Lux
AGC	Auto/Manual
S/N Ratio	≥50dB (AGC OFF)
Shutter Speed	1/2 - 1/20,000s , Slow shutter support
Wide Dynamic Range	Digital WDR
Exposure Mode	Auto/Manual/shutter mode
White Balance	Auto/Manual /ATW/Indoor/Outdoor/ lamp
Day & Night	External control (IR Cut Filter)
Light Control	Support IR/White/dual light
Amplifier	Built-in amplifier
Main Stream	2560x1440/2304x1296@20fps
Sub Stream	800X448/640x480@30fps
Network Interface	1ch 10/100Base Ethernet , RJ45 interface
Power	DC 12V
Size	38x38mm
Work Temperature	-10℃ ~50℃
Work Humidity	≤90% RH (non-condensing)

Application Scenario



Family



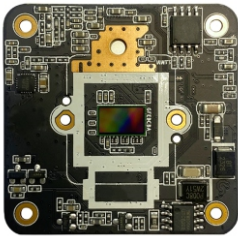
Office



Shop



Supermarket



Key Features

- 1/1.8 5MP CMOS Sensor
- Supports H.265+, H.265, and H.264 encoding
- Support soft photosensitivity:full-color mode
- Support intelligent analysis: pedestrian detection, vehicle detection, area detection and Warning line detection
- Support voice intercom, voice broadcasting and custom voice
- Supports image flipping and DWD
- Support Onvif
- Provide SDK (Windows, Android, Linux) development packages

IMA50S37
5MP Full color module Network Camera Module

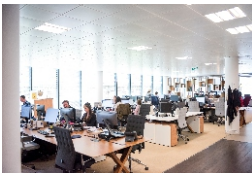
Specification

Image Sensor	1/1.8 5MP CMOS Sensor
Min.Illumination	Color : 0.0Lux , B/W : 0.001Lux
AGC	Auto/Manual
S/N Ratio	≥50dB (AGC OFF)
Shutter Speed	1/2 - 1/20,000s , Slow shutter support
Wide Dynamic Range	Digital WDR
Exposure Mode	Auto/Manual/shutter mode
White Balance	Auto/Manual /ATW/Indoor/Outdoor/ lamp
Day & Night	External control (IR Cut Filter)
Main Stream	2880×1620/2688×1520/2560×1440@25fps
Sub Stream	640×480/480x360/352×288/176×144@30fps
Network Interface	1ch 10/100Base Ethernet , RJ45 interface
Power	DC 12V
Size	42x42mm
Work Temperature	-30°C ~60°C
Work Humidity	≤90% RH (non-condensing)

Application Scenario



Family



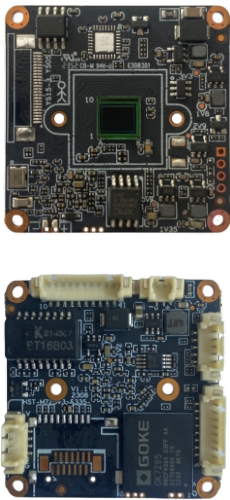
Office



Shop



Supermarket



Key Features

- 1/2.8" 5MP Sony STARVIS IMX335 CMOS
- Maximum resolution up to 2592x1944@30fps
- True Day/Night, 3D DNR, Digital WDR
- Support humanoid detection motion detection
- Support two way audio, Built-in audio amplifier function
- Support ONVIF and XM protocol
- Support TCP/IP/HTTP/NTP/DHCP/SMTP/RTSP
- Open SDK(Linux,Windows), CGI,easily to be integrated with other digital systems
- Support OPENIPC development

IM50A01
5MP HD Network Camera Module

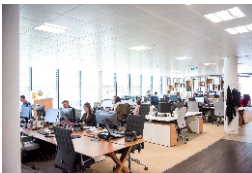
Specification

Image Sensor	1/2.8" 5MP Sony STARVIS IMX335 CMOS
Min.Illumination	Color : 0.02Lux , B/W : 0.002Lux
AGC	Auto/Manual
S/N Ratio	≥50dB (AGC OFF)
Shutter Speed	1/2 - 1/20,000s , Slow shutter support
Wide Dynamic Range	Digital WDR,≥73.7dB
Exposure Mode	Auto/Manual/shutter mode
White Balance	Auto/Manual /ATW/Indoor/Outdoor/ lamp
Day & Night	External control (IR Cut Filter)
Light Control	Support IR/White/dual light
Amplifier	Built-in amplifier
Main Stream	2592x1944/1920x1080@30fps
Sub Stream	640x480/640x360@30fps
Network Interface	1ch 10/100Base Ethernet , RJ45 interface
Power	DC12V
Size	38x38mm
Work Temperature	-10℃ ~50℃
Work Humidity	≤90% RH (non-condensing)

Application Scenario



Family



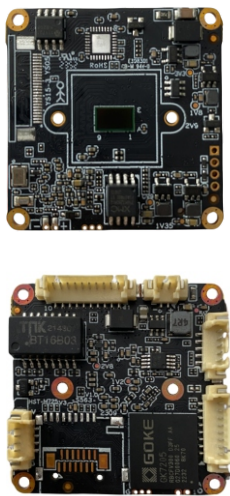
Office



Shop



Supermarket



Key Features

- 1/2.8" 5MP GC5603 CMOS
- Maximum resolution up to 2592x1944@30fps
- True Day/Night, 3D DNR, Digital WDR
- Support humanoid detection, motion detection
- Support two way audio, Built-in audio amplifier function
- Support ONVIF and XM protocol
- Support TCP/IP/HTTP/NTP/DHCP/SMTP/RTSP
- Open SDK(Linux,Windows), CGI,easily to be integrated with other digital systems
- Support OPENIPC development

IM50B01
5MP HD Network Camera Module

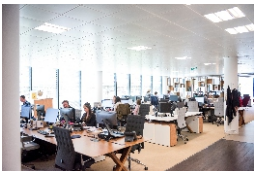
Specification

Image Sensor	1/2.8" 5MP GC5603 CMOS
Min.Illumination	Color : 0.02Lux , B/W : 0.002Lux
AGC	Auto/Manual
S/N Ratio	≥50dB (AGC OFF)
Shutter Speed	1/2 - 1/20,000s , Slow shutter support
Wide Dynamic Range	Digital WDR, ≥73.7dB
Exposure Mode	Auto/Manual/shutter mode
White Balance	Auto/Manual /ATW/Indoor/Outdoor/ lamp
Day & Night	External control (IR Cut Filter)
Light Control	Support IR/White/dual light
Amplifier	Built-in amplifier
Main Stream	2592x1944/1920x1080@30fps
Sub Stream	640x480/640x360@30fps
Network Interface	1ch 10/100Base Ethernet , RJ45 interface
Power	DC12V
Size	38x38mm
Work Temperature	-10°C ~50°C
Work Humidity	≤90% RH (non-condensing)

Application Scenario



Family



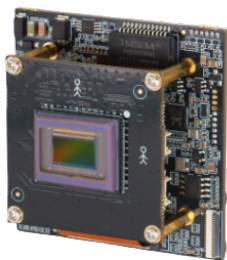
Office



Shop



Supermarket



Key Features

- 1/2.8" 8MP Sony STARVIS IMX415 CMOS
- Maximum resolution up to 3840x2160@30fps
- True Day/Night, 3D DNR, Digital WDR
- Support Motion Detection
- Support AI human detection, vehicle detection
- Support the P2P on Android, IOS
- Support 2 sets alarm in/out
- Support 2.5Tops
- Support ONVIF
- Support TCP/IP/HTTP/NTP/DHCP/SMTP/RTSP

IM80A01
AI 8MP IP Moulde

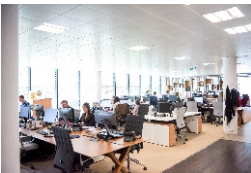
Specification

Image Sensor	1/2.8" 8MP Sony STARVIS IMX415 CMOS
Min.Illumination	Color : 0.05Lux , B/W : 0.01Lux
AGC	Auto/Manual
S/N Ratio	≥50dB (AGC OFF)
Shutter Speed	1/2 - 1/20,000s , Slow shutter support
Wide Dynamic Range	Digital WDR, ≥120dB
Exposure Mode	Auto/Manual/shutter mode
White Balance	Auto/Manual /ATW/Indoor/Outdoor/ lamp
Day & Night	External control (IR Cut Filter)
Main Stream	3840X2160/2880X1620/2560X1440@30fps
Sub Stream	640×480/480x360/352×288/176×144@60fps
Network Interface	1ch 10/100Base Ethernet , RJ45 interface
Power	DC12V
Size	38X38+50X50mm
Work Temperature	-20°C ~60°C
Work Humidity	≤90% RH (non-condensing)

Application Scenario



Family



Office



Shop



Supermarket



Key Features

- 1/2.8" 8MP Sony STARVIS IMX678 CMOS
- Maximum resolution up to 3840x2160@30fps
- True Day/Night, 3D DNR, Digital WDR
- Support Motion Detection
- Support AI human detection, vehicle detection
- Support the P2P on Android, IOS
- Support 2 sets alarm in/out
- Support 2.5Tops
- Support ONVIF
- Support TCP/IP/HTTP/NTP/DHCP/SMTP/RTSP

IM80B01
AI 8MP IP Moulde

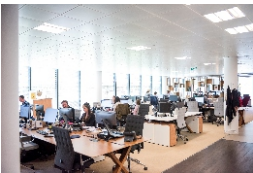
Specification

Image Sensor	1/1.8" 8MP 8MP Sony STARVIS IMX678 CMOS
Min.Illumination	Color : 0.001Lux , B/W : 0Lux
AGC	Auto/Manual
S/N Ratio	≥50dB (AGC OFF)
Shutter Speed	1/2 - 1/20,000s , Slow shutter support
Wide Dynamic Range	Digital WDR, ≥120dB
Exposure Mode	Auto/Manual/shutter mode
White Balance	Auto/Manual /ATW/Indoor/Outdoor/ lamp
Day & Night	External control (IR Cut Filter)
Main Stream	3840X2160/2880X1620/2560X1440@30fps
Sub Stream	640×480/480x360/352×288/176×144@30fps
Network Interface	1ch 10/100Base Ethernet , RJ45 interface
Power	DC12V
Size	38X38+50X50mm
Work Temperature	-20°C ~60°C
Work Humidity	≤90% RH (non-condensing)

Application Scenario



Family



Office



Shop



Supermarket



Shenzhen CCDCAM Technology Co.,Ltd

6F, Huolibao West Building, No.31, Gaoxin North
6th Avenue, High-tech Park North Area, Nanshan
District, Shenzhen, China

+86 138 2317 8855

+86 755 8310 6630

sydney@ccdcam.com