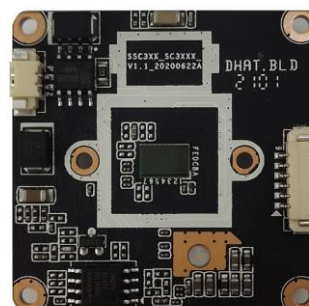


IMA30F25

3.0MP AI Hunman Detection HD Network Camera Module

Key features:

- 1/2.7" Low-illumination Progressive Scan CMOS Sensor;
- 3.0MP HD resolution;
- Embedded Web Server, support Internet Explore monitoring, configuration, upgrade;
- Support All subnet ONVIF, Easy connect different network segments NVR;
- Support the P2P on Android, IOS;
- Support ONVIF2.6;
- H.265+/H.265/H.264 main profile encoding, two simultaneous video streams ;
- Support smart dual light, infrared, warm light full color three modes optional;
- Support AI human detection, Area detection;
- Standard SDK(Linux,Windows), easily to be integrated with other digital systems.



Specification:

Models		IMA30F25
		3.0MP AI Hunman Detection HD Network Camera Module
Image Sensor		1/2.7" 3.0MP CMOS SC 3335
Min. Illumination		Color : 0.01Lux
S/N Ratio		≥38dB
Wide Dynamic Range		Digital WDR,
Digital noise Reduction		DNR,3DNR
Exposure Mode		Auto/Manual/shutter mode (shutter range variable)
White Balance		Auto/Manual /ATW/Indoor/Outdoor/Daylight lamp/Sodium lamp
Day & Night		Day / Night / External control (IR Cut Filter)
Video Compression		H.265+/H.265/H.264 Main Profile
Audio Compression		G711U/G711A/AAC
Max. Image Resolution		3MP@25fps
Image Resolution	Main stream	3MP@25fps, 1080P/720P/D1 @30pfs
	Sub-stream	D1/VGA/640*360/CIF@30fps
Streams		Dual streams
IO Interface		Auto Focus(Optional)
Bitrate		CBR/VBR, bitrate: 50Kbps~6Mbps variable
Simultaneous Live View		Main stream Up to 5,Sub-stream Up to 5
OSD		Support camera name、time display .etc, OSD position can be adjusted
Motion detect		Support
Privacy Masking		1 privacy masks programmable
P2P		Android,IOS
Protocols		HTTP/NTP/DHCP//RTSP/P2P/ONVIF,GB28181/RTMP(optional)
Onvif		Onvif 2.6
Network		10/100M Base-TX Ethernet, RJ45 Connector
Store		Unsupport
Protection Level		TVS 6,000V lightning protection
Power Supply		DC12V/POE
Dimensions		38x38mm
Working Temperature		-30°C ~85°C, Humidity≤90%RH(Unsupport-condensing)