

IMA50L12 5MP STARVIS HD Network Camera Module

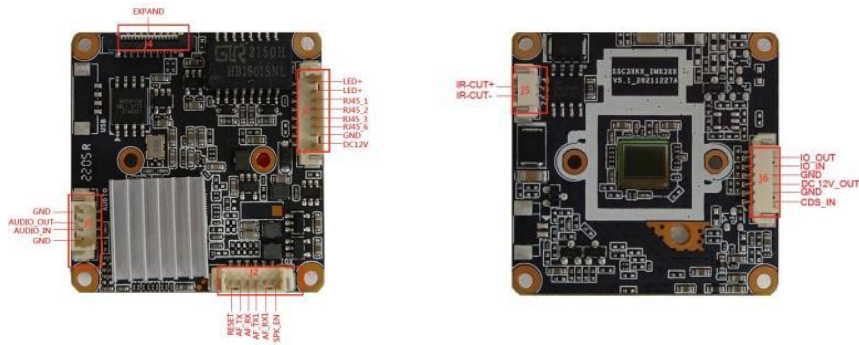


Key Features:

- 1/2.8" 5MP Sony IMX335 CMOS Sensor;
- 2592*1944 HD resolution;
- Embedded Web Server, support Internet Explore monitoring, configuration, upgrade;
- Support sub domain, easily to implement DHCP (ADSL dial-up);
- Support Danale APP on Android, IOS by P2P;
- Support ONVIF 2.6;
- H.265/H.264 main profile encoding, two simultaneous video streams ;
- Support AI human detection, Area detection;
- Support CDS control and PWM control two lighting modes;
- Standard SDK(Linux,Windows), easily to be integrated with other digital systems.

Technical specifications:

Image Sensor	
Sensor	1/2.8" 5.0MP CMOS Sony IMX335
Maximum resolution	2592*1944@30fps
Minimum illumination	Color: 0.01Lux
Function	
AGC	Auto/Manual
S/N ratio	≥50dB (AGC OFF)
Shutter speed	1/2 - 1/20,000s, Slow shutter support
Wide dynamic range	Digital WDR
Day/Night Mode	
Exposure mode	Auto/ Manual/shutter mode
White balance	Auto/ Manual /ATW/ Indoor/Outdoor/ lamp
Day & night	External control (IR Cut Filter)
Image resolution	
Main stream	3840 ×2160/3072x2048/2592x1944@30fps
Sub stream	640×480/480x360/352×288/176×144@30fps
General protocol	
Network protocol	TCP/IP, HTTP, NTP, IGMP, DHCP, UDP, SMTP, RTP, RTSP, ARP, DDNS, DNS, P2P
ONVIF protocol	Standard ONVIF
Network interface	
Wired	1ch 10/100BaseT Ethernet, RJ45 interface
Other	
Power supply	12VDC
Size	38x38mm
Operation temperature	-30°C ~85°C,
Working humidity	Humidity≤90%RH(no condensation)



Interface	pin	Pin name	Functional Parameter
J1	1	12VDC	DC12V input
	2	Gnd	Power supply ground
	3	RJ45_6	Network receiving differential signal RJ6
	4	RJ45_3	Network receiving differential signal RJ3
	5	RJ45_2	Network receiving differential signal RJ2
	6	RJ45_1	Network receiving differential signal RJ1
	7	LED+	Network status indicator light
	8	LED+	Network status indicator light
J2	1	RESET	RESET
	2	AF_TX	AF automatic focusing interface
	3	AF_RX	NG
	4	AF_TX1	reset
	5	AF_RX1	reset
	6	SPK_EN	Amplifier IO
J3	1	GND	Gnd
	2	AUDIO_OUT	External speaker
	3	AUDIO_IN	External active pickup
	4	GND	Gnd
J4	1	EXPAND	EXPAND
J5	1	IR-CUT	IR-CUT+
	2	IR-CUT	IR-CUT-
J6	1	GDS_IN	Photosensitive control signal input
	2	GND	Gnd
	3	DC12V_OUT	DC12V output
	4	GND	Gnd
	5	IO_IN	Soft photosensitive infrared
	6	IIO_OUT	Soft light sensitive warm light